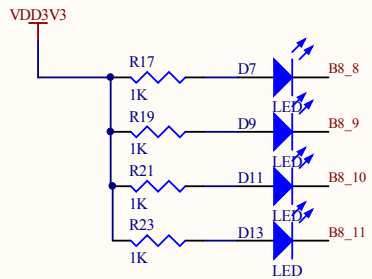
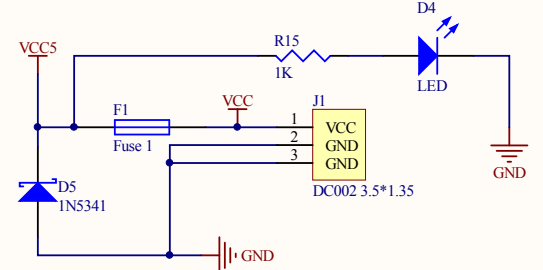
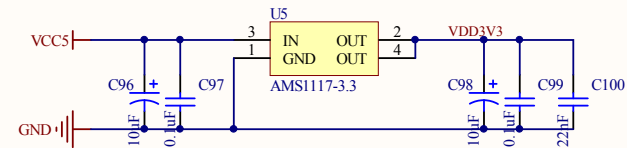
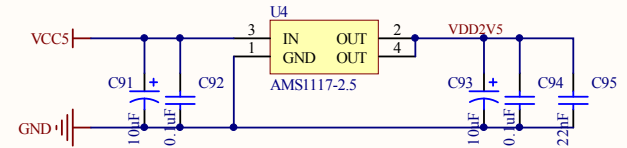
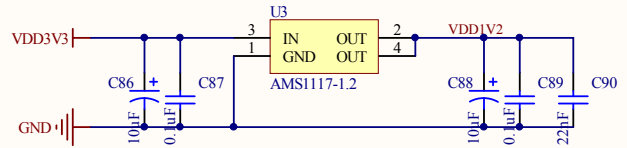
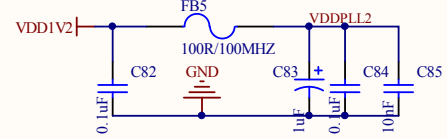
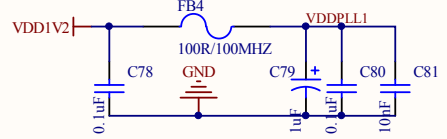
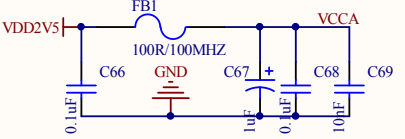
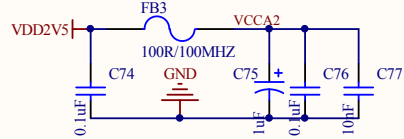
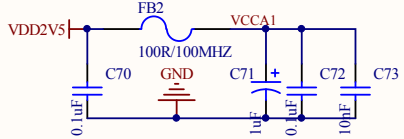
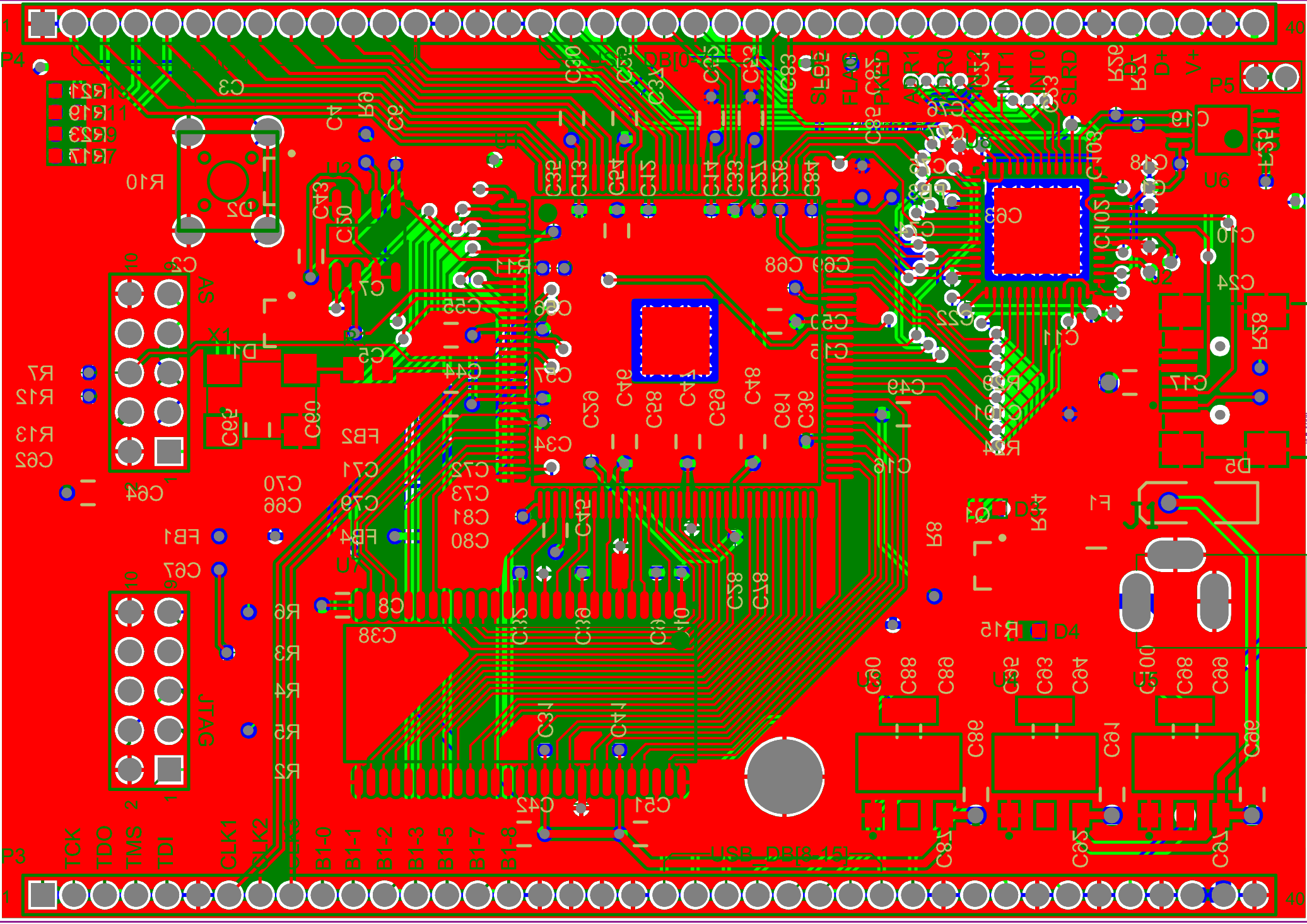


Title		
Size: A4	Number:	Revision:
Date: 2012/7/11	Time: 13:22:57	Sheet of
File: CORE-1		

P4		P3	
1	GND	1	VCCA
2	B8_11	2	TCK
3	B8_10	3	TDO1
4	B8_9	4	TMS
5	B8_8	5	TDI1
6	B8_7	6	GND
7	B8_6	7	CLK1
8	B8_5	8	CLK2
9	B8_4	9	CLK3
10	B8_3	10	B1_0
11	B8_2	11	B1_1
12	B8_1	12	B1_2
13	B8_0	13	B1_3
14	GND	14	B1_5
15		15	B1_7
16	U_DB0	16	B1_8
17	U_DB1	17	GND
18	U_DB2	18	
19	U_DB3	19	
20	U_DB4	20	U_DB15
21	U_DB5	21	U_DB14
22	U_DB6	22	U_DB13
23	U_DB7	23	U_DB12
24	U_SLWR	24	U_DB11
25	U_SLOE	25	U_DB10
26	U_FLAGD	26	U_DB9
27	U_PKEND	27	U_DB8
28	U_FIFOADR1	28	U_CLKOUT
29	U_FIFOADR0	29	
30	U_INT2	30	GND
31	U_INT1	31	VDD1V2
32	U_INT0	32	GND
33	U_SLRD	33	VDD2V5
34	GND	34	GND
35	U_D-	35	VDD3V3
36	U_D+	36	GND
37	VBUS	37	GND
38	GND	38	VCC
39	VDD3V3	39	GND
40		40	GND



Title		
Size: A4	Number:	Revision:
Date: 2012/7/11	Time: 13:22:58	Sheet of
File: CORE-3		



- 1R51
- 1R16
- 6R33
- 4R12

TCK
TDO
TMS
TDI
CLK1
CLK2

USB_DBI[8-15]

40

40

PCB-LEGEND

Comment	Designator	Footprint	Quantity
USB	J2	USB2.0, Type B, SM; 5P	1
LED	D3, D4, D7, D9, D11, D13	1608[0603]	6
SW-PB	S1	SW-6-6	1
1N5341	D5	SMA	1
BAT54C	D1, D2	SOT23_N	2
100K	R24	R0805	1
10K	R3, R4, R7, R11, R12, R13, R25	1608[0603]	7
1K	R17, R19, R21, R23	1608[0603]	4
1K	R2, R8, R10, R15, R28, R29	R0805	6
2.2K	R14	R0805	1
25R	R1, R5, R6, R9	R0805	4
4.7K	R26, R27	1608[0603]	2
9012	Q1	SOT-23B_L	1
Header 40	P3, P4	40X1 2.0mm	2
Header 5X2	P1, P2	2X5 2.54mm	2
Header 2	P5	2X1 2.0mm	1
100R/100MHZ	FB1, FB2, FB3, FB4, FB5	R0805	5
Fuse	F1	0805_N	1
CY7C68013A-56LFXC	U8	LF56A_N	1
EP3C10E144C8N	U1	EQFP144_N	1
0.1uF	C1, C3, C9, C10, C11, C12, C13, C14, C15, C16, C18, C19, C20, C21, C22, C23, C24, C26, C27, C28, C29, C31, C32, C33, C34, C35, C36, C37, C38, C39, C40, C41, C56, C57, C58, C59, C60, C61, C62, C63, C66, C68, C70, C72, C74, C76, C78, C80, C82, C84, C87, C89, C92, C94, C97, C99	1608[0603]	56
10uF	C8, C17, C25, C30, C42, C43, C44, C45, C46, C47, C48, C49, C50, C51, C52, C53, C54, C55, C64, C65, C86, C88, C91, C93, C96, C98	C1206	26
1uF	C2, C67, C71, C75, C79, C83, C101	R0805	7
10pF	C4, C5, C6, C7, C102, C103	1608[0603]	6
10nF	C69, C73, C77, C81, C85	1608[0603]	5
22nF	C90, C95, C100	1608[0603]	3
AMS1117-1.2	U3	ZZ311	1
AMS1117-2.5	U4	ZZ311	1
AMS1117-3.3	U5	ZZ311	1
AT24C64	U6	TSSOP-ST8_L	1
DC002 3.5*1.35	J1	DC002	1
HY57V561620	U7	54_TSOP2_400AF_M	1
M25P16	U2	SO8_L	1
XTAL50M	X1	XO37DRECNA50M	1